

# Meadows of Dan

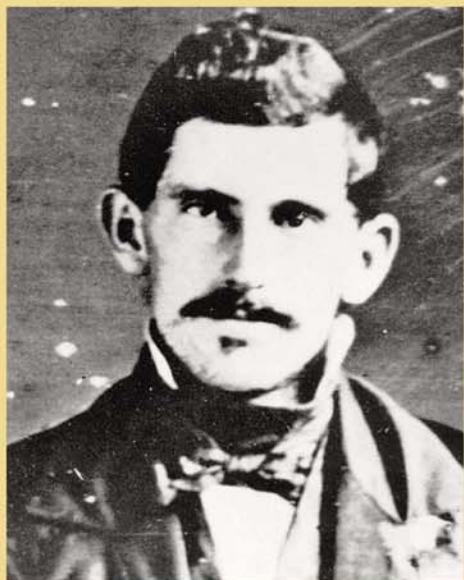
Patrick County is named for a fiddler, Patrick Henry, and is where the Piedmont Plateau meets the Blue Ridge Mountains. Settled in Revolutionary times, it has always been a musical place. Stuart, the county seat, is named for a string band leader who was also a Confederate cavalry officer, General J.E.B. Stuart. A singer, he was killed in battle at age 31. Famed minstrel banjoist Sam Sweeney was in Stuart's band, and also died during the war.

Nine local families have produced a huge number of musicians during two centuries, and continue to do so. These families vary in their origins: German, English, Ulster Irish, and African-American. But in Patrick County they share a string band music that has proven remarkably durable. There are frequent jam sessions and concerts here or nearby most weekends.

Numerous breathtaking sights such as the Pinnacles of Dan, Lover's Leap, and the Mabry Mill are close by. Two of Virginia's few remaining covered bridges are over the Smith River near Woolwine. J.E.B. Stuart's home is at Ararat, near the North Carolina border. There's good food here, fine lodging, and if you feel an urge to sing or dance, go ahead.



Mabry Mill



Sam Sweeney



Blackard-Shelor Family

# The Crooked Road

## Virginia's Heritage Music Trail

From the Blue Ridge Mountains to the Coalfields region, Southwest Virginia is blessed with historic and contemporary music venues, musicians, and fretted instrument makers. Historically isolated, the region retained its strong musical legacy by passing traditions down through musical families to an appreciative community.

Old time mountain music, bluegrass, and gospel can be enjoyed all year long and several museums are devoted to showcasing the area's rich musical heritage.

The Crooked Road winds through the ruggedly beautiful Appalachian Mountains and leads you to the major hotspots of old time mountain music, country music, and bluegrass. Alive and kickin' for today's fans, these venues preserve and celebrate musical traditions passed down through generations. Annual festivals, weekly concerts, radio shows, and jam sessions ring out to large audiences and intimate gatherings. Please visit the Crooked Road website to plan your trip to coincide with the current entertainment events.



The Carter Family



Dr. Ralph Stanley

[www.thecrookedroad.org](http://www.thecrookedroad.org)



### MAJOR VENUES

- ★ Blue Ridge Institute & Museum
- ★ The Floyd Country Store & County Sales
- ★ Blue Ridge Music Center
- ★ Rex Theater & Old Fiddlers Convention
- ★ Heartwood
- ★ Birthplace of Country Music
- ★ Carter Family Fold
- ★ Country Cabin II
- ★ Ralph Stanley Museum

— The Crooked Road

